

Local Digital Roadmap for Gloucestershire

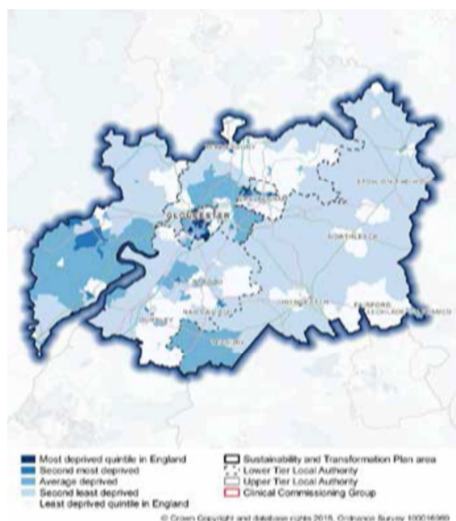
“Clinically led improvement, enabled by new technology, is transforming the delivery of health care and our management of population health. Yet strategic decisions about clinical transformation and the associated investment in information and digital technology can all too often be a footnote to NHS board discussions. This needs to change.”

Delivering the Benefits of Health Care, Nuffield Trust, February 2016

Gloucestershire’s Sustainability and Transformation Plan (STP) sets out the significant challenges that we face and the opportunities we must take to ensure local people can access high quality, sustainable and safe, physical and mental health care into the future.

The key to supporting this vision is through digital technology. The way in which care services are delivered and accessed will need to change. The Local Digital Roadmap (LDR) describes our goals and plans to use digital technology to support a healthier Gloucestershire. Our aim is to work together across health and social care. We believe that digital technology has the potential to improve care where health care professionals are able to access the information they need to make sure the right care is given at the right time and the right services are provided. We will encourage people to take more control over their health through the use of technology and by signposting to suitable services and community support.

As a region Gloucestershire has a growing population with more complex needs – it is estimated that 47,500 people over the age of 65 are living with a long term condition. This is projected to rise to 77,000 by 2030.



The Gloucestershire LDR covers the same area and range of organisations as the STP footprint and supports delivery of the STP. The STP has identified some clear whole system wide transformation initiatives which will be supported by some key technology initiatives:



Over the last two years organisations in Gloucestershire have worked together on a number of complex projects with joint governance and strong clinical leadership. The LDR will build upon this approach and will continue to oversee significant technology changes one of which is Joining up your Information (JUYI) programme. JUYI will deliver a secure online portal which will allow health care professionals to share patient information and improve the quality of decision making, which is vital to supporting new models of care.

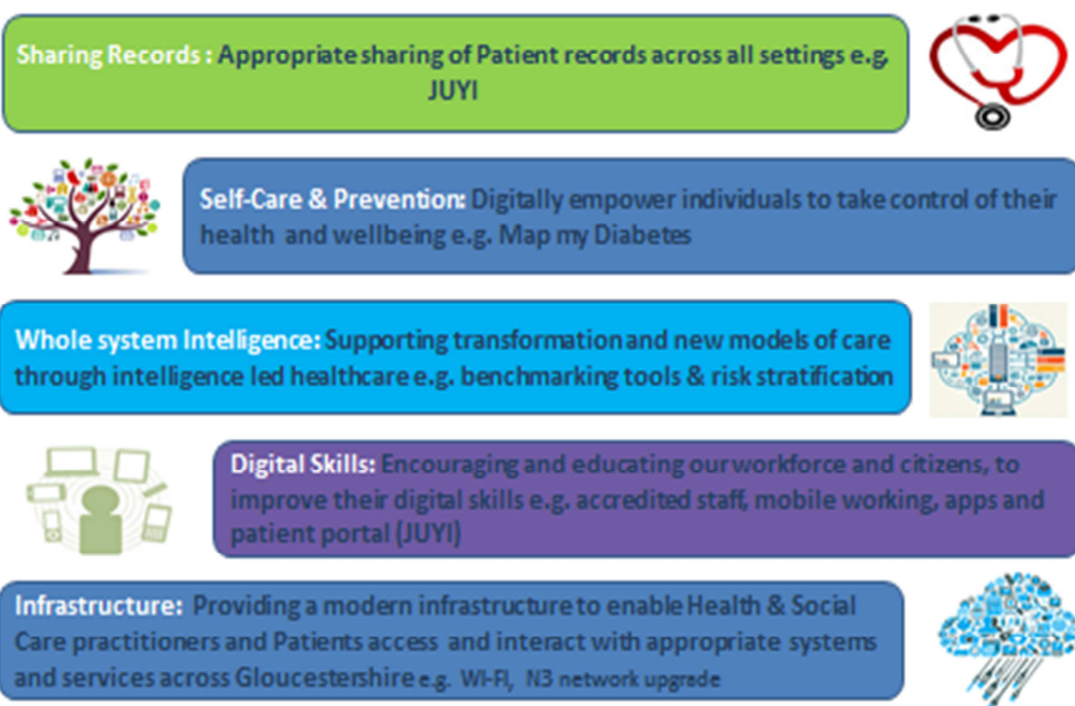
We are also committed to using technology to support more efficient working through roll out of electronic prescriptions and introducing new ways of managing the workforce rotas more effectively including GP practice staff, nurses, therapists and hospital doctors.

NHS England's 'Five Year Forward View' and 'Personalised Health and Care 2020' set the ambition for the NHS to be paper free at the point of care by 2020. Many of the projects currently being undertaken will enable us to move towards that target, however the scope of the LDR is broader than this remit and an integrated programme now includes:

- ◆ Paper Free @Point of Care – for information used both within and shared between organisations
- ◆ Digitally enabled self-care.
- ◆ Real-time data analytics at the point of care
- ◆ Whole systems intelligence to support population health management and effective commissioning, clinical surveillance and research.
- ◆ Infrastructure to support the delivery of the transformational service changes.

The diagram below highlights the key components of our digital vision:

Local Digital Roadmap



Our plan is ambitious but is reflective of the need to meet the challenges outlined in the STP. This plan will be achieved by working together as a health and social care economy, by listening to our citizens, patients, carers, families and workforce to ensure we deliver the change that is sustainable for our population.

For further information visit <http://www.gloucestershireccg.nhs.uk/gloucestershire-stp/> to download an electronic copy of the Local Digital Roadmap for Gloucestershire.